

Price Guide 2024



4K's Kitchens Ltd

Cattle Market Road
Nottingham
NG2 3GY

0115 9868825

Email: info@4kskitchens.co.uk

www.4kskitchens.co.uk

Open Hours:

Monday to Friday: 8.30am - 5pm
Saturdays: 8am - 2pm



4K's Kitchens - Price Guide

Aura Super Matt

White
Mussel
Dove Grey
Navy Blue
Graphite

Vivo Matt

White
Cashmere
Light Grey
Dust Grey
Anthracite
Indigo

Vivo Gloss

White
Ivory
Cashmere
Light Grey
Dust Grey
Anthracite

Vogue Gloss

Indigo

Stratto Super Matt shaker

White
Light Grey
Dust Grey
Indigo

Rivington Super Matt shaker

Cashmere
Stone Grey
Graphite

Boston Super Matt

White
Mussel
Cashmere
Dove Grey
Dust Grey
Graphite
Navy Blue
Reed Green
Fjord

Cartmel Ash Shaker

White
Ivory
Mussel
Cashmere
Light Grey
Dust Grey
Anthracite
Indigo
Fir Green
Sage Green

Buckingham Ash Shaker

Dakar
Stone Grey
Navy Blue

Avondale

Ivory

Price below includes 18mm White Carcase - Fully assembled with soft close as Standard

DECRPTION	Includes VAT		DECRPTION	Height	Includes VAT
150mm Base Unit	£163		300mm Wall Unit	720mm	£133
300mm Base Unit	£157		300mm Curved Wall Unit	720mm	£355
300mm Curved Base Unit	£476		400mm Wall Unit	720mm	£139
400mm Base Unit	£163		450mm Wall Unit	720mm	£143
450mm Base Unit	£164		500mm Wall Unit	720mm	£144
500mm Base Unit	£165		600mm Wall Unit	720mm	£158
600mm Base Unit	£180		800mm Wall Unit	720mm	£200
800mm Base Unit	£226		900mm Wall Unit	720mm	£204
900mm Base Unit	£233		1000mm Wall Unit	720mm	£209
1000mm Base Unit	£237		600mm Corner Wall (300 door) - 720		£161
600mm Under Oven Housing	£146		500mm Glass Wall Unit	720mm	£182
500/600mm Draweline Base	£245		1000mm Glass Wall Unit	720mm	£362
500mm 3 or 4 Drawer Pack	£302		600mm Boiler Wall Unit	900mm	£200
600mm 3 or 4 Drawer Pack	£318		600mm Bridge Unit	290/360	£144
800mm 2 or 3 Drawer Pack	£389		1000mm Bridge Unit	290/360	£197
900mm 2 or 3 Drawer Pack	£407		300mm Wall Unit	900mm	£152
1000mm 2 or 3 Drawer Pack	£425		300mm Curved Wall Unit	900mm	N/A
800mm Corner Base (400 door)	£218		400mm Wall Unit	900mm	£165
1000mm Corner Base (500 door)	£227		450mm Wall Unit	900mm	£171
600mm Tall Oven Housing 1970mm	£439		500mm Wall Unit	900mm	£176
600mm Tall Larder or Fr/Fz Unit	£431		600mm Wall Unit	900mm	£190
500mm Tall Larder Unit 1970mm	£384		800mm Wall Unit	900mm	N/A
300mm Tall Larder Unit 1970mm	£354		900mm Wall Unit	900mm	N/A
2400mm PLINTH	£90		1000mm Wall Unit	900mm	N/A
WALL END PANEL	£73		600mm Corner Wall (300 doo	900mm	£181
BASE END PANEL	£95		3000mm CORNICE		£90
TALL END PANEL	£282		3000mm LIGHT PELMET		£90

4K's Kitchens - Price Guide

Choose a door range:

Lucente Handleless Matt

White

Cashmere

Light Grey

Dust Grey

Anthracite

Indigo

Fir Green

Lucente Handleless Gloss

White

Cream

Cashmere

Light Grey

Dust Grey

Anthracite

Larrissa Handleless Gloss

Indigo

Price below includes 18mm White Carcase - Fully assembled with soft close as Standard

DECRPTION	Includes VAT
150mm Base Unit	£167
300mm Base Unit	£164
300mm Curved Base Unit	£634
400mm Base Unit	£180
450mm Base Unit	£184
500mm Base Unit	£190
600mm Base Unit	£203
800mm Base Unit	£260
900mm Base Unit	£274
1000mm Base Unit	£288
600mm Under Oven Housing	£151
500/600mm Drawerline Base	£275
500mm 3 or 4 Drawer Pack	£324
600mm 3 or 4 Drawer Pack	£342
800mm 2 or 3 Drawer Pack	£428
900mm 2 or 3 Drawer Pack	£462
1000mm 2 or 3 Drawer Pack	£485
800mm Corner Base (400 door)	£236
1000mm Corner Base (500 door)	£252
600mm Tall Oven Housing 1970mm	£478
600mm Tall Larder or Fr/Fz Unit	£488
500mm Tall Larder Unit 1970mm	£446
300mm Tall Larder Unit 1970mm	£378
2400mm PLINTH	£90
WALL END PANEL	£73
BASE END PANEL	£95
TALL END PANEL	£282

DECRPTION	Height	Includes VAT
300mm Wall Unit	720mm	£143
300mm Curved Wall Unit	720mm	£464
400mm Wall Unit	720mm	£157
450mm Wall Unit	720mm	£162
500mm Wall Unit	720mm	£169
600mm Wall Unit	720mm	£181
800mm Wall Unit	720mm	£233
900mm Wall Unit	720mm	£245
1000mm Wall Unit	720mm	£258
600mm Corner Wall (300 door) - 720		£168
500mm Glass Wall Unit	720mm	£216
1000mm Glass Wall Unit	720mm	£352
900mm Boiler Wall Unit	900mm	£233
600mm Bridge Unit	290/360	£158
1000mm Bridge Unit	290/360	£224
300mm Wall Unit	900mm	£168
300mm Curved Wall Unit	900mm	£554
400mm Wall Unit	900mm	£188
450mm Wall Unit	900mm	£193
500mm Wall Unit	900mm	£202
600mm Wall Unit	900mm	£217
800mm Wall Unit	900mm	N/A
900mm Wall Unit	900mm	N/A
1000mm Wall Unit	900mm	N/A
600mm Corner Wall (300 doo	900mm	£196
3000mm CORNICE		£90
3000mm LIGHT PELMET		£90

4K's Kitchens - Price Guide

Choose a door range:

Albany Solid Timber Painted

Porcelain

Dove Grey

Dust Grey

Navy Blue

Cambridge Solid Timber

Oak

Price below includes 18mm White Carcase - Fully assembled with soft close as Standard

DECRPTION	Includes VAT
150mm Base Unit	£169
300mm Base Unit	£176
300mm Curved Base Unit	£556
400mm Base Unit	£246
450mm Base Unit	£208
500mm Base Unit	£212
600mm Base Unit	£232
800mm Base Unit	£296
900mm Base Unit	£318
1000mm Base Unit	£334
600mm Under Oven Housing	£151
500/600mm Drawerline Base	£316
500mm 3 or 4 Drawer Pack	£335
600mm 3 or 4 Drawer Pack	£361
800mm 2 or 3 Drawer Pack	£443
900mm 2 or 3 Drawer Pack	£474
1000mm 2 or 3 Drawer Pack	£493
800mm Corner Base (400 door)	£253
1000mm Corner Base (500 door)	£274
600mm Tall Oven Housing 1970mm	£504
600mm Tall Larder or Fr/Fz Unit	£557
500mm Tall Larder Unit 1970mm	£499
300mm Tall Larder Unit 1970mm	£410
2400mm PLINTH	£90
WALL END PANEL	£102
BASE END PANEL	£138
TALL END PANEL	£325

DECRPTION	Height	Includes VAT
300mm Wall Unit	720mm	£155
300mm Curved Wall Unit	720mm	£369
400mm Wall Unit	720mm	£174
450mm Wall Unit	720mm	£184
500mm Wall Unit	720mm	£191
600mm Wall Unit	720mm	£210
800mm Wall Unit	720mm	£268
900mm Wall Unit	720mm	£288
1000mm Wall Unit	720mm	£302
600mm Corner Wall (300 door) - 720		£181
500mm Glass Wall Unit	720mm	£241
1000mm Glass Wall Unit	720mm	£403
600mm Boiler Wall Unit	900mm	£268
600mm Bridge Unit	290/360	£167
1000mm Bridge Unit	290/360	£234
300mm Wall Unit	900mm	£180
300mm Curved Wall Unit	900mm	£623
400mm Wall Unit	900mm	£203
450mm Wall Unit	900mm	£216
500mm Wall Unit	900mm	£226
600mm Wall Unit	900mm	£251
800mm Wall Unit	900mm	N/A
900mm Wall Unit	900mm	N/A
1000mm Wall Unit	900mm	N/A
600mm Corner Wall (300 doo	900mm	£209
3000mm CORNICE		£90
3000mm LIGHT PELMET		£90

4K'S - DOORS ONLY

SIZE	Classic Green Price Guide	Deluxe Pink Price Guide	Premium Blue Price Guide
110 x 596	£25.00	£25.00	£30.00
140 x 296	£20.00	£18.00	£26.00
140 x 396	£22.00	£20.00	£28.00
140 x 496	£24.00	£23.00	£30.00
140 x 596	£26.00	£26.00	£35.00
140 x 796	£29.00	£32.00	£40.00
140 x 896	£30.00	£37.00	£48.00
140 x 996	£32.00	£41.00	£46.00
175 x 396	£23.00	£25.00	£36.00
175 x 496	£29.00	£28.00	£37.00
175 x 596	£30.00	£30.00	£38.00
283 x 496	£32.00	£36.00	£53.00
283 x 596	£35.00	£40.00	£58.00
283 x 796	£41.00	£53.00	£72.00
283 x 896	£42.00	£59.00	£80.00
283 x 996	£44.00	£65.00	£85.00
355 x 496	£34.00	£43.00	£59.00
355 x 596	£38.00	£48.00	£64.00
355 x 796	£44.00	£64.00	£76.00
355 x 896	£48.00	£76.00	£89.00
355 x 996	£52.00	£76.00	£90.00
450 x 596	£49.00	£59.00	£71.00
490 x 596	£53.00	£60.00	£83.00
570 x 296	£41.00	£46.00	£61.00
570 x 396	£42.00	£53.00	£67.00
570 x 496	£43.00	£59.00	£76.00
570 x 596	£49.00	£71.00	£83.00
715 x 147	£44.00	£49.00	£67.00
715 x 296	£41.00	£56.00	£70.00
715 x 396	£42.00	£59.00	£76.00
715 x 446	£43.00	£62.00	£83.00
715 x 496	£44.00	£65.00	£84.00
715 x 596	£53.00	£77.00	£94.00
895 x 296	£44.00	£64.00	£83.00
895 x 396	£54.00	£74.00	£107.00
895 x 496	£61.00	£86.00	£104.00
895 x 596	£70.00	£94.00	£121.00
1245 x 296	£64.00	£77.00	£102.00
1245 x 396	£76.00	£92.00	£116.00
1245 x 496	£94.00	£112.00	£138.00
1245 x 596	£107.00	£133.00	£160.00
715 x 496 Glass	£142.00	£138.00	£235.00
895 x 496 Glass	£199.00	£196.00	£289.00
3 mtr Cornice	£90.00	£90.00	£90.00
3 mtr Lt Pelmet	£90.00	£90.00	£90.00
2.4 mtr Plinth	£90.00	£90.00	£90.00

(*) Glass door sizes & prices may differ due to design

Hinges & Handles sold separately

Note: All Prices stated are guide only as prices may fluctuate slightly between ranges



160 Bar Handle
Black
£4 each



160 Bar Handle
Copper
£4 each



160 Bar Handle
Gold
£4 each



160 Bar Handle
Steel
£4 each



Leopold Handle
£5 each



Lamont Pewter
Knob
£12 each



Lamont Pewter
Cup Handle
£36 each



150mm Pull Out Base Storage
Soft Closing
545.25.200/42.74
£89



300mm Pull Out Larder Storage
Soft Closing
546.45.214/239.05
£425



400mm Waste Boss Duo
502.21.413/96.29
£180

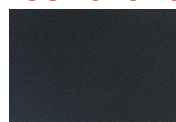


Nuvola Corner Storage
549.42.24*/163.56
£326

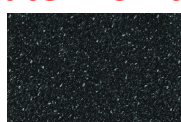
4K's Kitchens - Worktop Collection



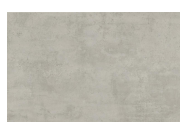
Wilsonart Laminate Worktops:



Black Atrium



Black Slate Gloss



Cloudy Cement



Colmar Oak



Taurus Beige



cypress
Cinnamon



Granite



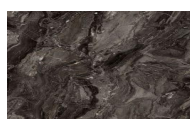
Lima



Marmo Grigio



Tectonica



Megara



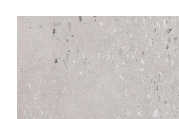
Midnight
Granite



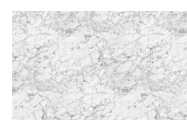
Nuvolento



Painting Brown



Terrazzo
Naturalle






Torrano Marble



Walnut Block

3000x600x40mm	Worktop	£99
3000x900x40mm	Breakfast Bar	£175
3000x600x8mm	Splashback	£155
3000x95x12mm	Upstand	£55

 		Laminate	
		Price A	Price B
3000x600x40mm	Worktop	£149	£201
4050x600x40mm	Worktop	£211	£272
4050x665x40mm	Breakfast Bar	£191	£460
2050x665x40mm	Breakfast Bar	£327	£257
4050x900x40mm	Breakfast Bar	£376	£504
2050x900x40mm	Breakfast Bar	£215	£279
4050x100x18mm	Upstand	£109	£109
3000x1210x8mm	Splashback	£292	£292

 		Laminate	
		Price A	Price B
3600x600x40mm	Worktop	£180	£244
3600x665x40mm	Breakfast Bar	£291	£409
3600x900x40mm	Breakfast Bar	£334	£448
3600x100x18mm	Upstand	£97	£97
3000x1200x8mm	Splashback	£292	£292

 		Quartz Effect	
		Price A	Price B
3000x630x20mm	Worktop	£555	£630
2000x960x20mm	Breakfast Bar	£560	£635
3000x760x12mm	Splashback	£415	£470
3000x100x12mm	Upstand	£100	£120
Care & Maintenance Kit		£40	£40
Installation Kit		£70	£70
Sink Clips		£16	£16
50ml Joint Adhesive		£23	£23



4K's KITCHENS PLANNING & COMPUTER DESIGN SERVICE

(With in 10 mile radius)

Local home visit appointments require a small £20 fee, Refundable when order is placed.

Ask a member of staff to book your no obligation design appointment.

With over twenty years experience we pride our family business on quality of service and with our

INSTALLATION SERVICE AVAILABLE

We can offer a competitive no obligation quote for our team of fitters to install your kitchen.

All our kitchen units are supplied ready assembled to give you an advantage of arranging your own installation.

All gas appliances must be installed by a Gas safe registered engineer.

It is your responsibility to arrange and pay for any gas appliances to be connected.

DELIVERY SERVICE AVAILABLE

Minimum delivery charge starts from £25

Due to insurance purposes we can only deliver to the ground floor door.

It is your responsibility if you wish for any goods to be taken upstairs.

TERMS & CONDITIONS

- * A deposit on your kitchen total is required when placing an order.
- * On receipt of your deposit you will receive an estimated delivery date.
- * Lead time on supply only kitchens are minimum 2 weeks from date of deposit.
- * Lead time on supply & Install kitchens are minimum 4 weeks from date of deposit.
- * We will not leave any goods at your home if payment is not received.
- * Payments are accepted by Cash, Debit/Credit Card, Bank Transfer.
- * We can NOT accept card payments over the phone.
- * Finance options are available.
- * Returns are NOT accepted.
- * Products that have been cut, made to measure or mixed to your requirements cannot be exchanged.
- * Credit Notes will be allocated should any refunds be allowed and will incur a 15% fee.
- * Damaged goods need to be reported within 3 working days of delivery.
- * An admin fee of £25 will occur if any changes are made once a deposit has been placed.
- * Faulty Appliances or missing parts on appliances are covered by Manufacturer's warranty. Please contact the manufacturer direct as we can only exchange if you received the wrong item.
- * Goods can be held after specified delivery date, but will incur 10% storage fee of total amount of order per week.
- * All our kitchen units are supplied assembled (no flat pack).
- * On supply only basis it is the customer's responsibility to ensure their fitter has checked all measurements are correct.
- * 4K's disclaim any arrangements you make direct with your own fitter.
- * All gas appliances must be installed by a Gas registered fitter, It is your responsibility to arrange this.
- * The installation balance must be paid by 4pm on the day of completion, if not a daily charge of £25 will be added.
- * We reserve the right to alter or change any terms of conditions without prior notice.

GUARANTEE'S

Unless otherwise stated all our kitchen doors, units, worktops, appliances, sinks etc come with a statutory 12 month manufacturer's guarantee.

Please ensure you register any appliances once fitted to activate your manufacturer's guarantee.

All our 'B' Graded' goods have a 6 month money back guarantee.

NOTE: All Black Gloss Worktops will show scratches more than any other worktop.

Please take great care when handling and installing glossy worktops as any type of



INTEREST FREE FINANCE AVAILABLE

Over 2 Years